

11. Notes on a small Collection brought by Licut. L. Cameron, C.B., from Angola. By Dr. ALBERT GÜNTHER, V.P.Z.S.

[Received June 20, 1876.]

The species enumerated in the following notes were obtained by Licut. Cameron during his recent remarkable journey across Africa, and have been deposited in the British Museum.

MAMMALIA.

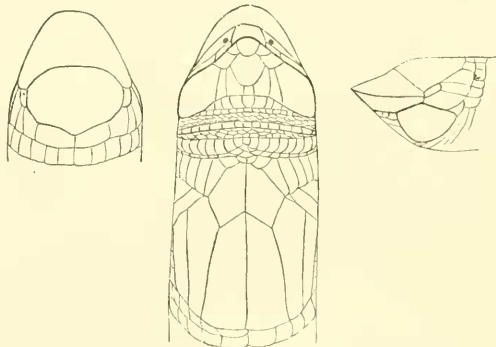
*Galago maholi* (Smith).

REPTILIA.

An Amphisbænian, represented by a single example, proves to belong to an undescribed species of *Phractogonus*, a genus representing in Africa the South-American *Cephalopeltis*.

PHRACTOGONUS SCALPER, sp. n.

Anterior margin of the nasal extremity hard and sharp. Of the two large plates which cover the upperside of the head, the posterior is longer than the anterior, and not quite so long as broad, bordered behind by two pairs of rather narrow scutes. Nostrils in the anterior portion of an elongate nasal; the nasals separated by a broad median



Head of *Phractogonus scalper*.

upper labial. Three upper labials on each side, of which the two anterior are very narrow, linear, the hindmost being much broader. Lower lip covered by a mental, and on each side by two short small anterior and one very large posterior labial. Ocular very small, the eye being not or scarcely visible. Three pairs of elongate thoracic shields, of which the central pair is preceded by a pair of rhombic scutes of moderate size. Præanal pores none. Sixteen longitudinal series of acutes along the dorsal half, and fourteen along the ventral half of the body; the median ventral scutes are much broader than the

